

Atlantic City Expressway

Third Lane Widening Project
MP 31.60 to MP 44.20

PE Phase - Public Information Center

Winslow and Gloucester Townships, Camden County and
Washington Township, Gloucester County

March 25, 2024 to April 5, 2024

Public Comment Period through May 10, 2024



Michael Baker
INTERNATIONAL



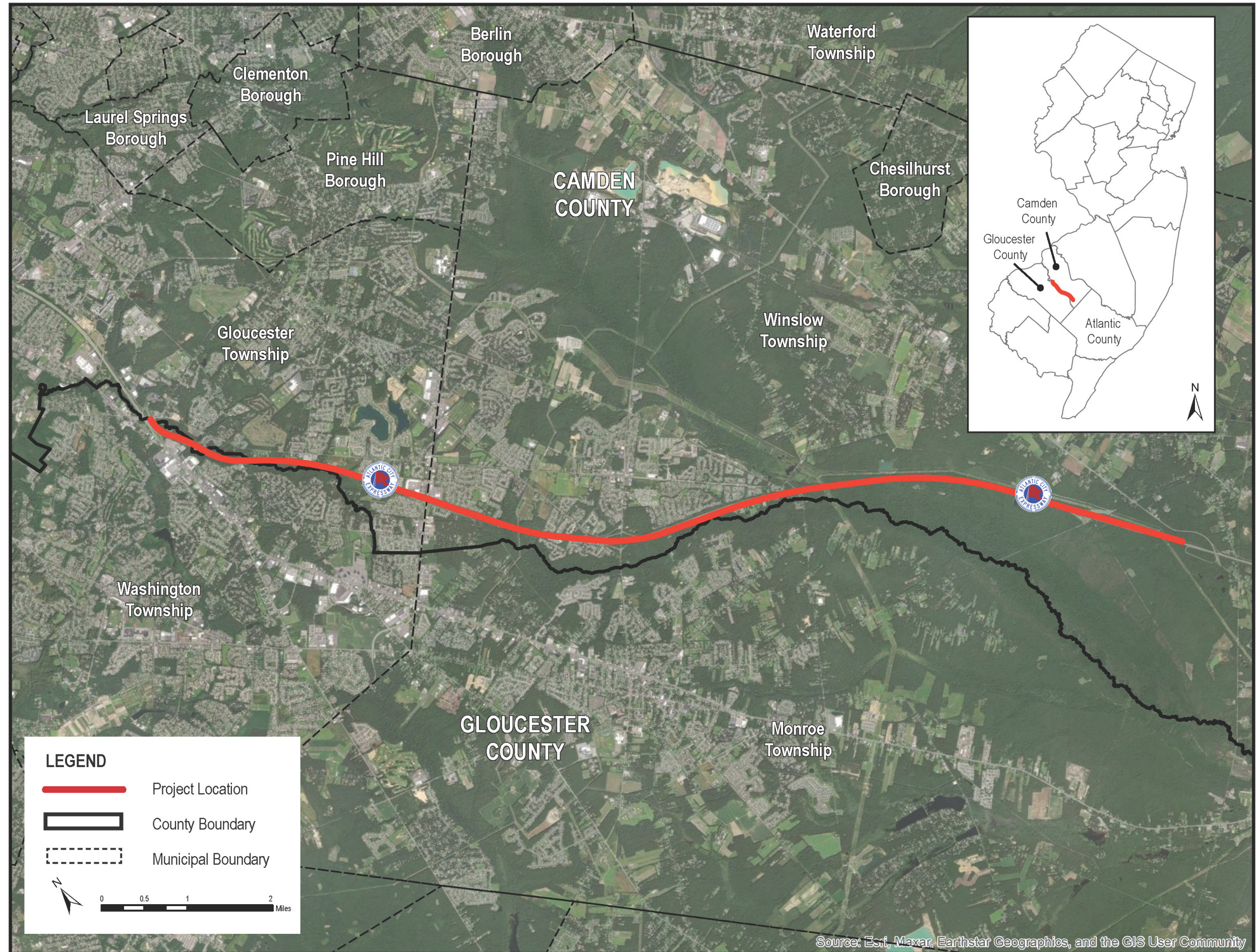
Agenda

- Project Overview
- Purpose and Need Statement
- Goals and Objectives
- Existing Conditions
- Preliminary Preferred Alternative (PPA)
- Project Schedule
- Project Team Contact Information



Michael Baker
INTERNATIONAL

Project Overview



Purpose and Need

Purpose:

To improve the overall traffic operations and general safety along the Atlantic City Expressway (ACE) corridor while aiming to minimize environmental, right-of-way, and structural impacts.

Need:

To alleviate recurring congestion, particularly during the peak summer periods. The recurring congestion and geometric complexities at portions of the project limits result in an excessively high number of rear-end and side-swipe crashes. The existing level of service (LOS) is poor and operates at a LOS E. The LOS is expected to degrade to a LOS F by the design year of 2045.



Goals and Objectives

- ✓ Mitigate summer traffic congestion along the corridor and increase mobility in the South Jersey and Philadelphia Region
- ✓ Increase coastal resilience in the region
- ✓ Create a safe corridor for ACE users
- ✓ Provide enhanced accommodations for emergency evacuation purposes
- ✓ Eliminate as many existing substandard geometric features as possible and update roadway to the latest standards where practical
- ✓ Improve the quality of life for residents and businesses along the ACE corridor and the feeder roadway network, particularly during summer months.
- ✓ Improve access to employment by improving mobility.
- ✓ Support efforts to increase the economic competitiveness of the Philadelphia and South Jersey region.
- ✓ Reduce air and noise pollution resulting from summer traffic congestion along the corridor.
- ✓ Avoid and minimize adverse impacts to sensitive environmental and cultural resources.
- ✓ Implement a cost-effective and financially feasible alternative



Existing Condition: Atlantic City Expressway







- A. **Functional classification: Urban Principal Arterial Freeway / Expressway**
- B. **ADT: Approx. 22,500 vehicles per day in each direction**
- C. **Speed limit: 65 MPH (Route 42 is 55 MPH)**
- D. **Existing typical section: Two lanes in each direction with varying shoulder widths**
- E. **Separated by variable width grass median MP 31.70 to 43.90 and concrete glare screen at eastern terminus**

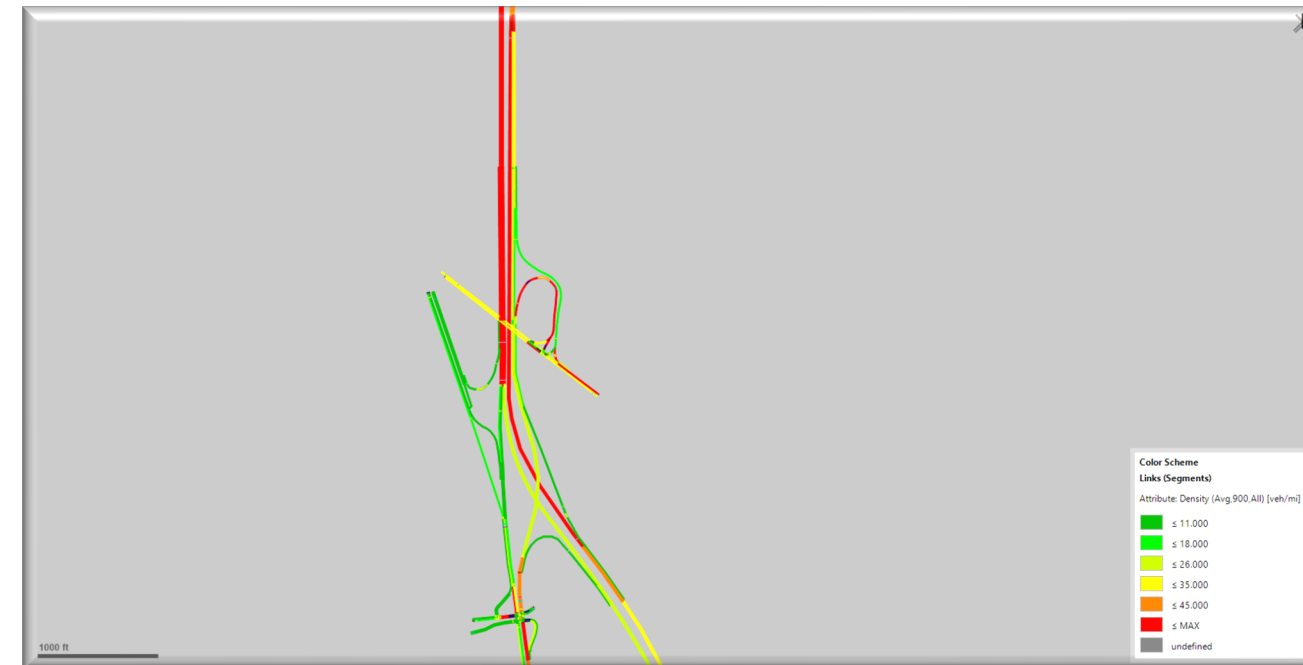


Existing Condition: Safety & Operations

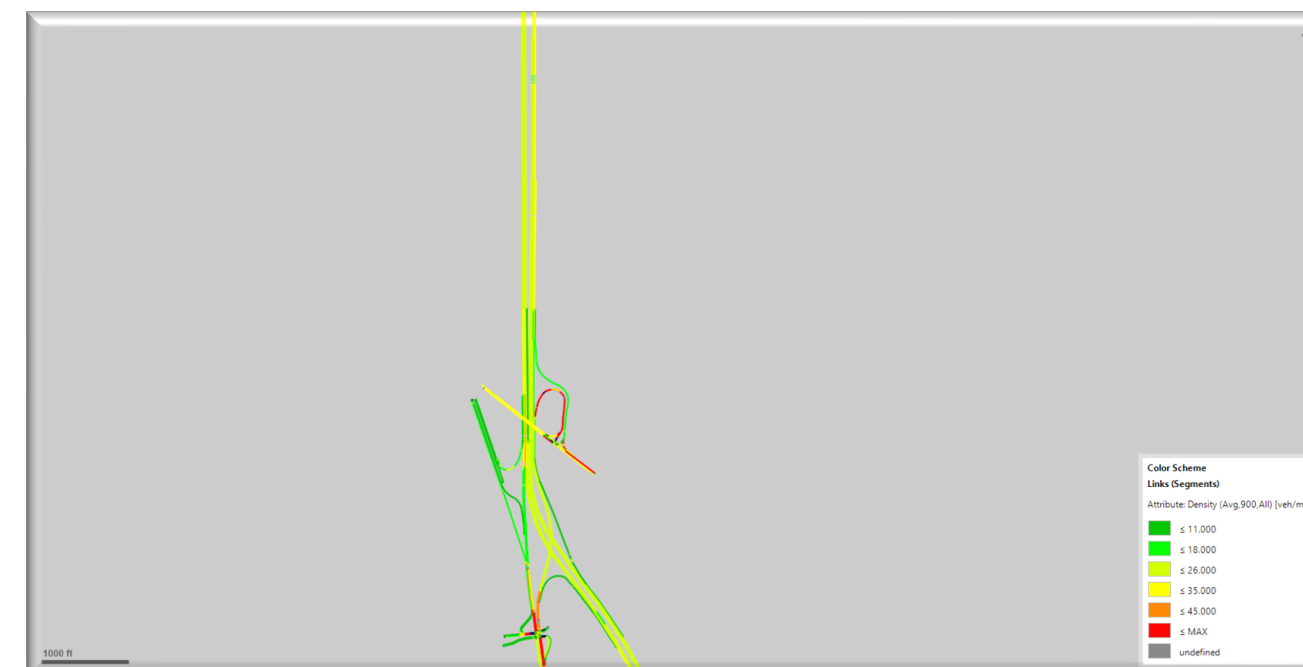
A. Significant number of crashes at Route 42 Interchange

B. The existing Level of Service (LOS) is E and degrade to LOS F by Design Year 2045

Attribute Density (Avg. 900, All) [veh./mi.]		
	≤ 11,000	LOS A
	≤ 18,000	LOS B
	≤ 26,000	LOS C
	≤ 35,000	LOS D
	≤ 45,000	LOS E
	≤ MAX	LOS F



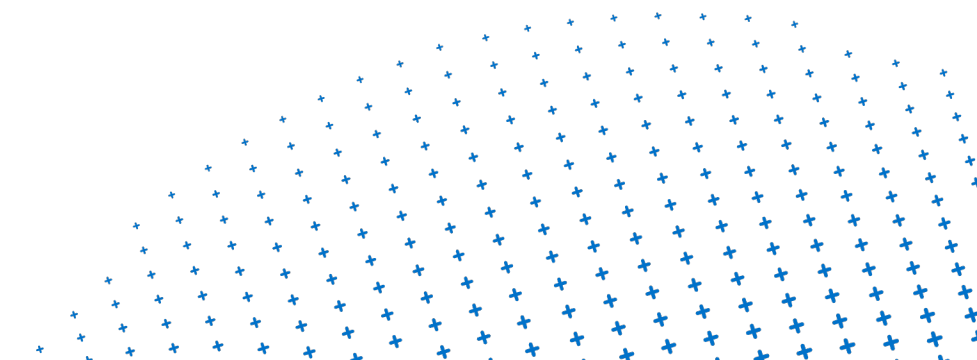
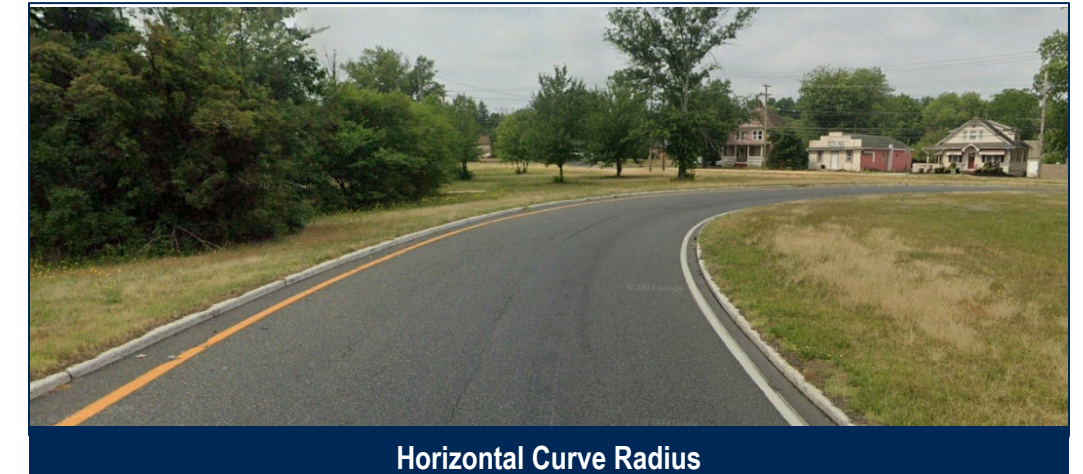
No Build 2045



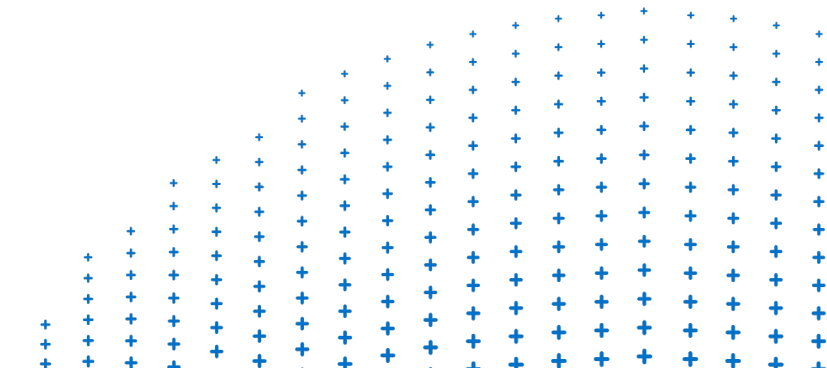
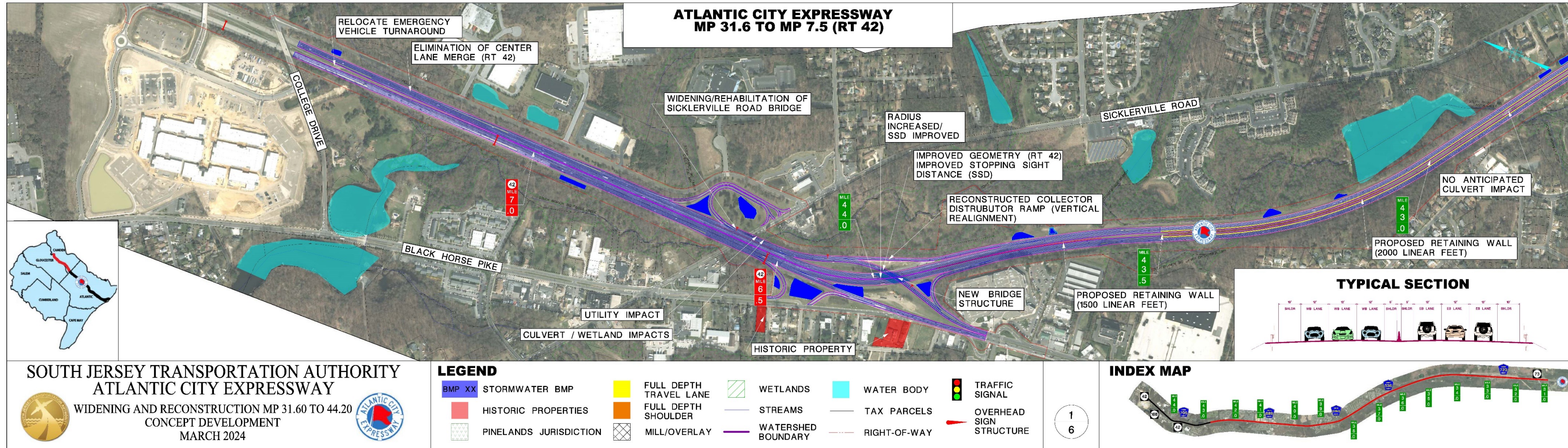
2045 Build



Existing Condition: Substandard Features

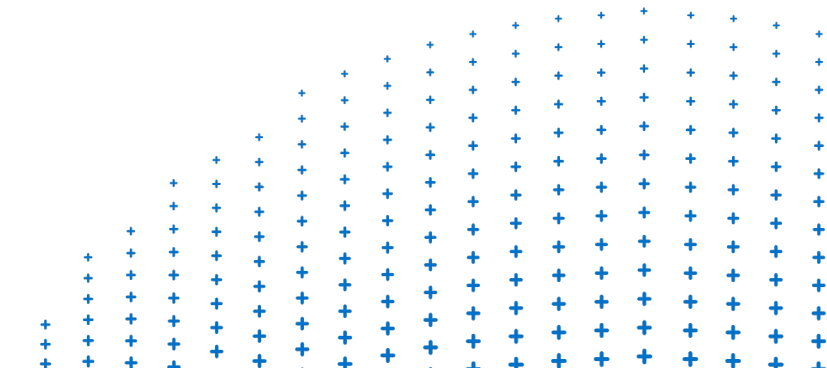
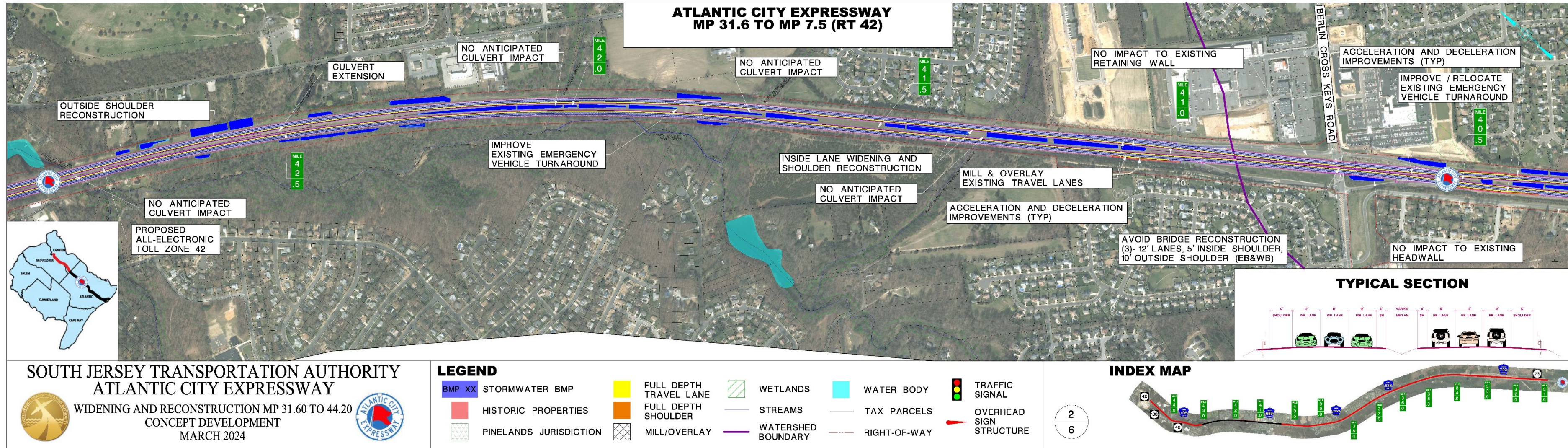


AC Expressway Interchange with NJ-42 (3 – LANES THROUGH RT. 42 INTERCHANGE)



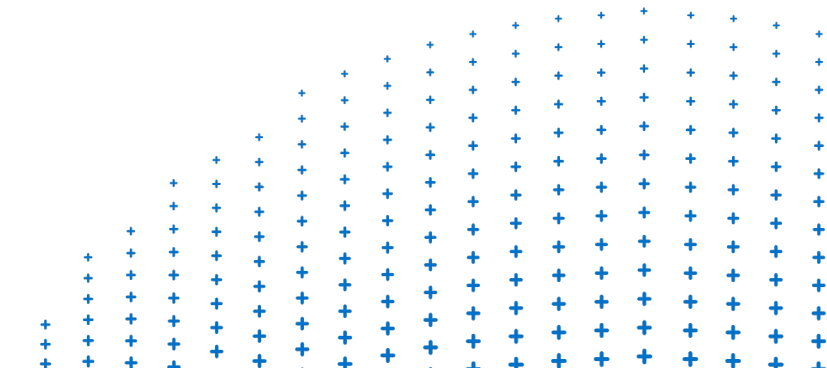
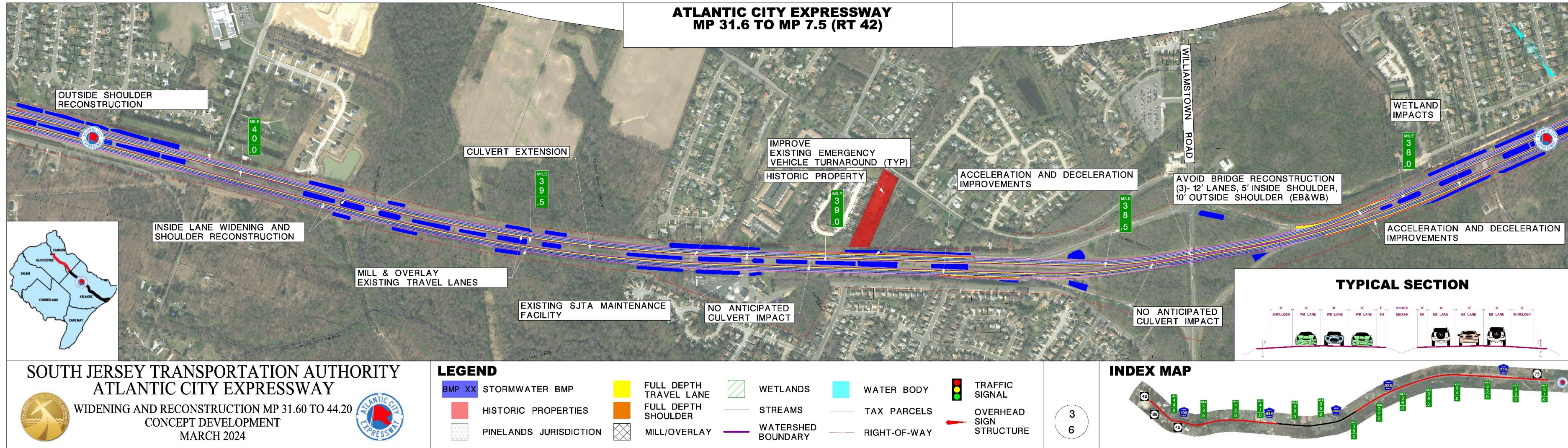
AC Expressway

Inside Widening with Accel./Decel. Improvements



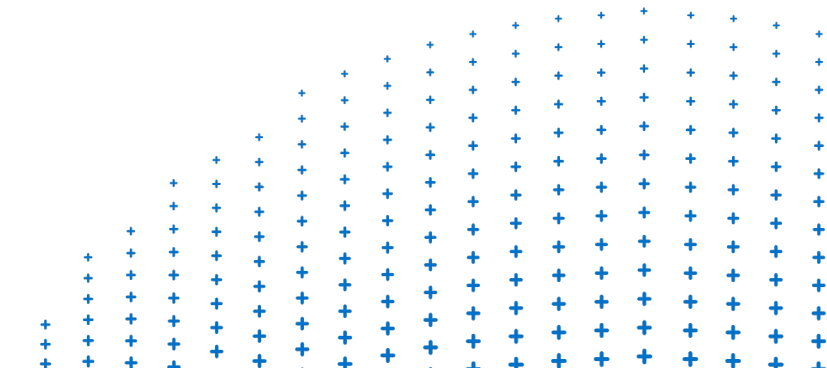
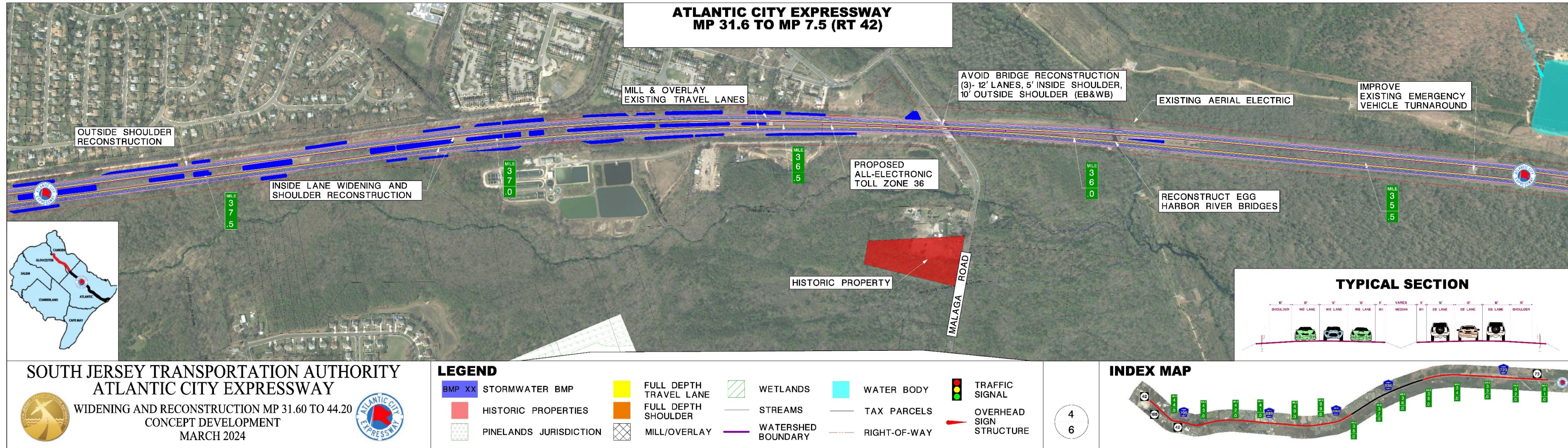
AC Expressway

Inside Widening with Accel./Decel. Improvements



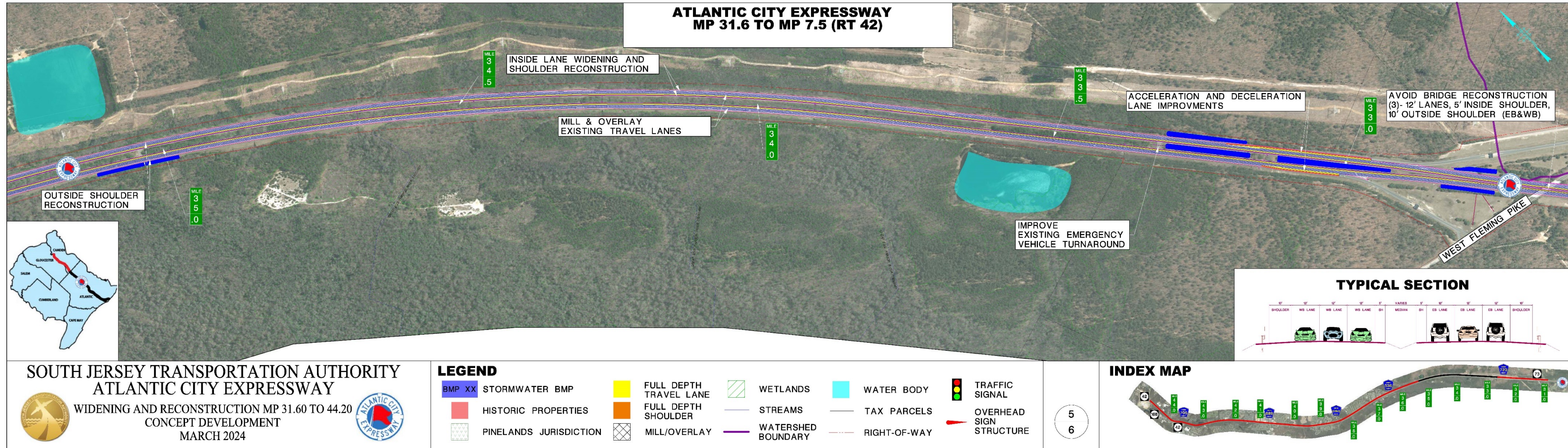
AC Expressway

Inside Widening with Accel./Decel. Improvements



AC Expressway

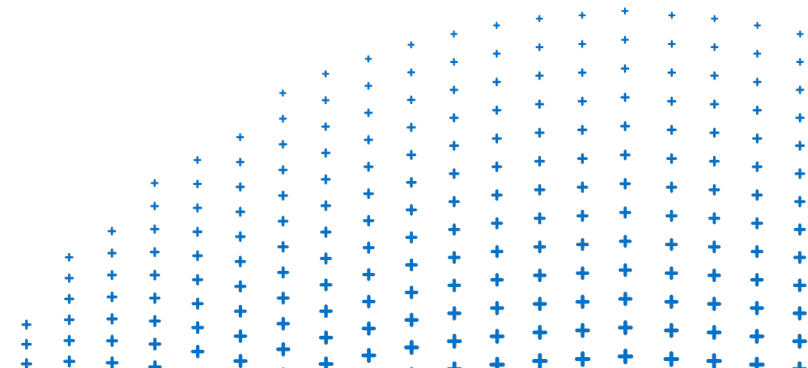
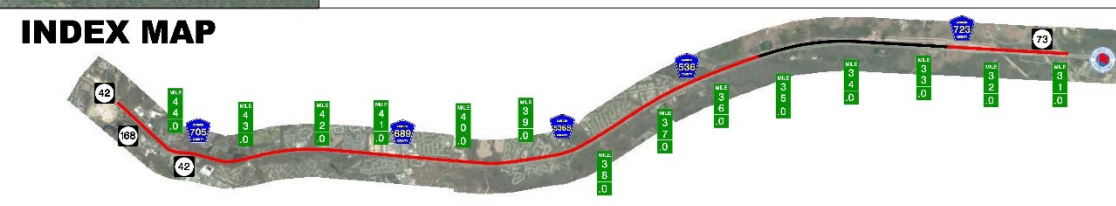
Inside Widening with Accel./Decel. Improvements



SOUTH JERSEY TRANSPORTATION AUTHORITY
ATLANTIC CITY EXPRESSWAY
 WIDENING AND RECONSTRUCTION MP 31.60 TO 44.20
 CONCEPT DEVELOPMENT
 MARCH 2024

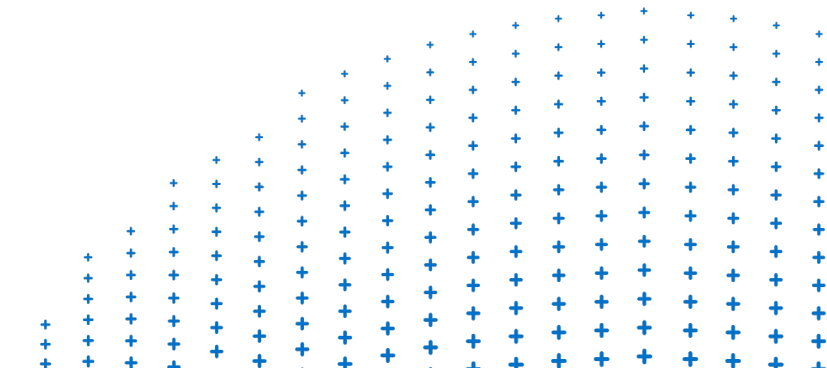
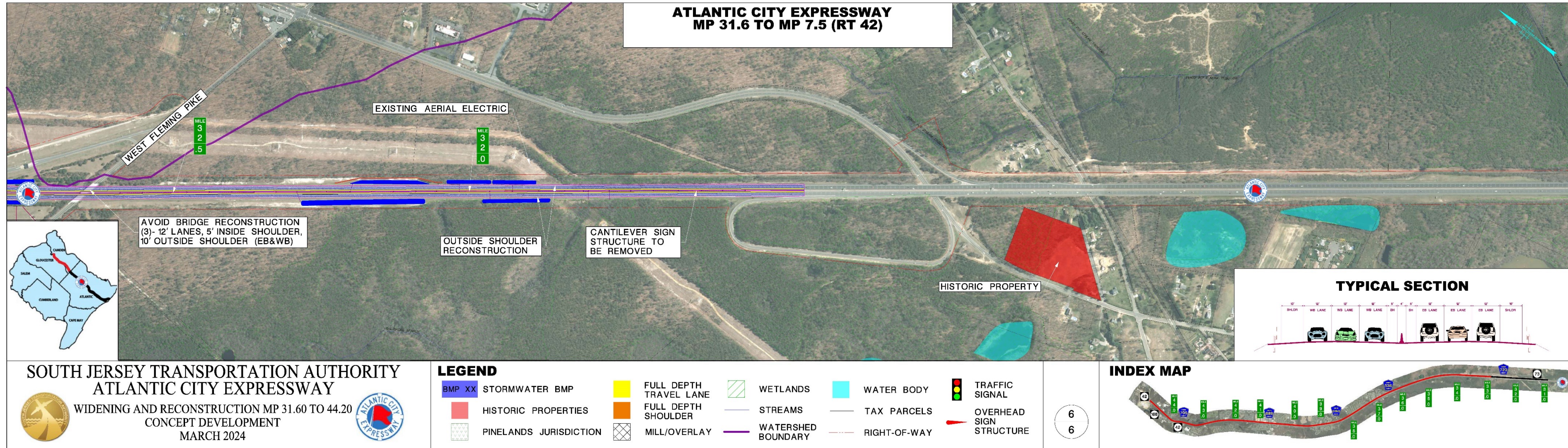
LEGEND

BMP XX STORMWATER BMP	FULL DEPTH TRAVEL LANE	WETLANDS	WATER BODY	TRAFFIC SIGNAL
HISTORIC PROPERTIES	FULL DEPTH SHOULDER	STREAMS	TAX PARCELS	OVERHEAD SIGN STRUCTURE
PINELANDS JURISDICTION	MILL/OVERLAY	WATERSHED BOUNDARY	RIGHT-OF-WAY	



AC Expressway

Inside Widening with Accel./Decel. Improvements



Project Schedule

Concept Development Completed 2022

- Stakeholder and Public Information Center
- Public Comment Period
- Preliminary Preferred Alternative

Preliminary Engineering 2022-2024

- Environmental Clearances
- Advance PPA design
- Preliminary Engineering
- Continued Public Outreach & Involvement

Final Design 2024-2027

- Finalize Design & Develop Construction Documents
- Secure all Environmental Permits
- Advertise, Bid and Award Contracts for Construction
- Continued Public Outreach Involvement

Construction (TBD)

- Staged Construction
- No Long-term Detours Anticipated
- Two Lanes to be Maintained Each Way



Public Comments

For more information, please visit:

www.acewidening.com

Please submit any questions and comments by May 10, 2024 to:

info@acewidening.com



Michael Baker
INTERNATIONAL